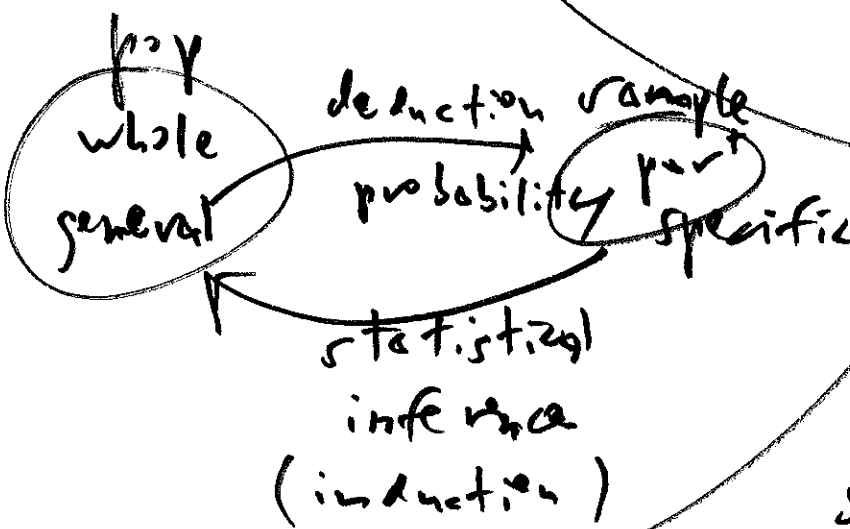
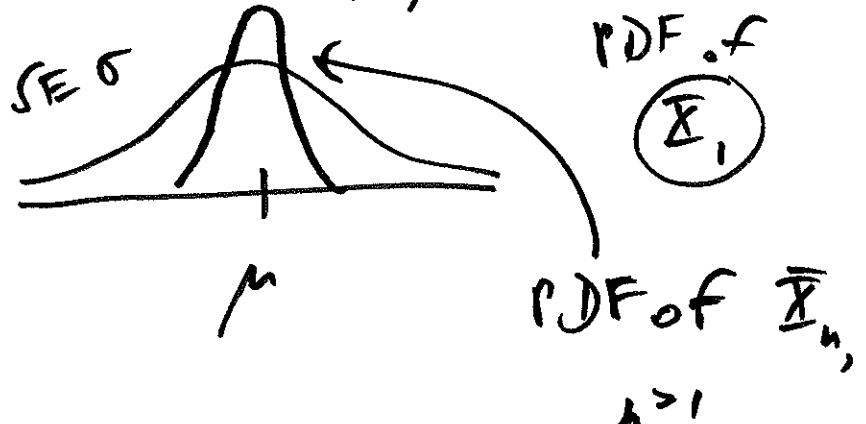


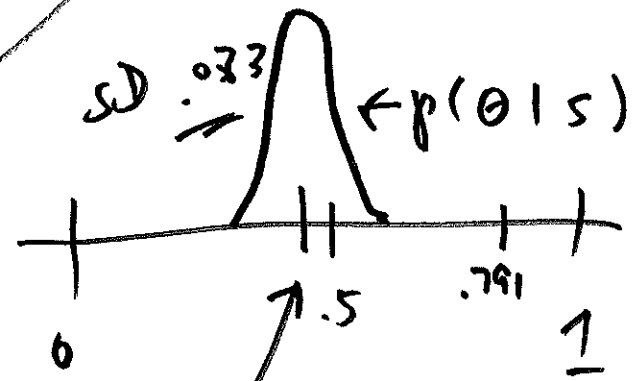
this time:
 next time:
 distributions

read: JS ch. 6 | AMS 131
 23 Jul 18

$(X_i | \mu, \sigma^2) \stackrel{i.i.d.}{\sim} N(\mu, \sigma^2) \quad (i=1, \dots, n) \quad (1)$



9.40 ethnicity-neutral $\theta = .791$



frequentist.

actual \rightarrow 0.46
 sampling θ

~~scribbled out text~~

$p = p(\text{data as extreme as or more extreme})$

ethnicity neutral true

$P(S \leq 100 | \theta = .791)$

10^{-25}

Bayesian

$$p(\theta | S)$$

(10.42)

$$f_{\epsilon_1, \epsilon_2}(x_1, x_2) \textcircled{2}$$

